

Historic Stone Lifting Locations GPS Coordinates

Have An Adventure

Last Updated – 22/05/2019

Martin Jancsics – The Stone Man

Below are a list of GPS Coordinates to locations for 14 Historic Stones around Scotland.

Latitude & Longitude are given in both DD (Decimal Degrees) & DMS (Degrees, Minutes, Seconds).

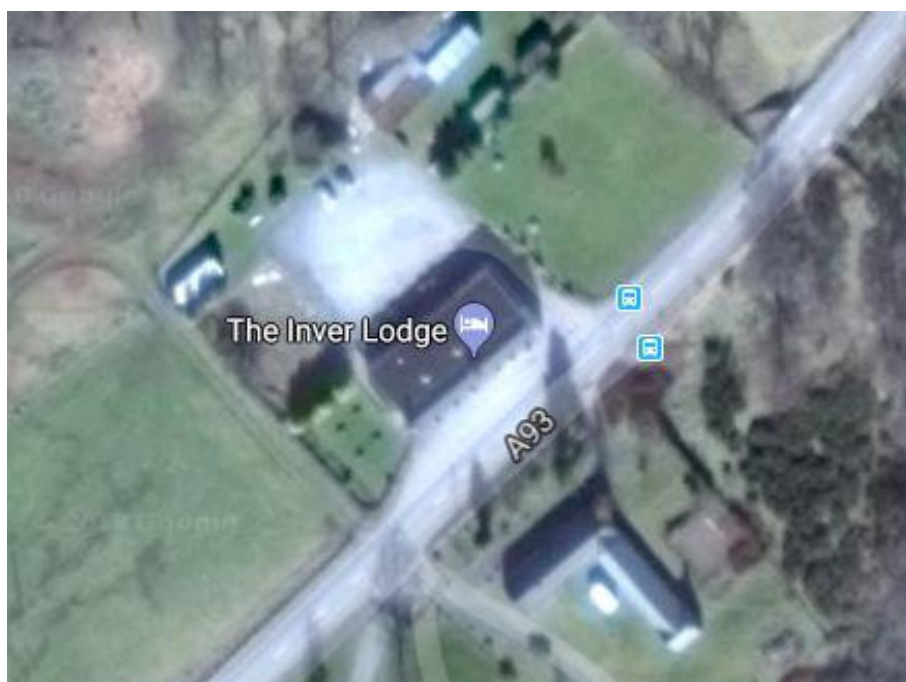
Historic Stone	Location	DD	DMS
Inver Stone	Crathie	57.025014, -3.269350	N 57° 1' 30.05" W 3° 16' 9.66"
Barevan Stone	Cawdor	57.500693, -3.942569	N 57° 30' 2.495" W 3° 56' 33.248"
Dalwhinnie Stone	Dalwhinnie	56.930036, -4.241946	N 56° 55' 48.13" W 4° 14' 31.005"
Newtonmore Stone	Newtonmore	57.059741, -4.128754	N 57° 3' 35.068" W 4° 7' 43.514"
Glen Roy Stones	Glen Roy	56.977863, -4.751494	N 56° 58' 40.307" W 4° 45' 5.378"
Fianna Stone	Glen Lyon	56.602048, -4.247548	N 56° 36' 7.373" W 4° 14' 51.172"
Castle Menzies Stone	Aberfeldy	56.623848, -3.897077	N 56° 37' 25.853" W 3° 53' 49.477"
Sadlin Mare Stone	Sma' Glen	56.446111, -3.779304	N 56° 26' 46" W 3° 46' 45.494"
Ardvorlich Stone	Ardvorlich, Lochearnhead	56.379042, -4.216974	N 56° 22' 44.551" W 4° 13' 1.106"
Puterach Stone	Balquhidder	56.357833, -4.363006	N 56° 21' 28.199" W 4° 21' 46.821"
Dinnie Stones	Banchory	57.064752, -2.650592	N 57° 3' 53.107" W 2° 39' 2.131"
Auchernack Stones	Grantown On Spey	57.302199, -3.616683	N 57° 18' 7.916" W 3° 37' 0.058"
Dropping Cave Stone Always check high tide time's at Cromarty before walking to the stone there.	Cromarty The stone itself is along the shoreline & is about a 30 minute walk	57.681568, -4.032429 57.680039, -4.004143	N 57° 40' 53.645" W 4° 1' 56.744" N 57° 40' 48.1404" W 4° 0' 14.9148"
Strathmore Of Durness Stone	Altnaharra	58.417098, -4.639399	N 58° 25' 1.553" W 4° 38' 21.836"

Inver Stone:

The Inver Stone, located at Crathie, outside of a small cottage & directly across the road from 'The Inver Lodge'.



The Inver Lodge



Shown is the Inver Lodge with the cottage where the stone rests circled in red.

Barevan Stone:

The Barevan Stone sits in an old church yard near Cawdor.



Shown is the church yard from aerial view showing the area when the stone sits marked in a red circle.



The two photos above showing the view from the road where you will turn off to the church yard.

Dalwhinnie Stone:

The Dalwhinnie sits outside of a restaurant & hotel at Dalwhinnie called ‘The Snack Shack’.



Pictured opposite is the restaurant where the stone sits.

Newtonmore Stone:

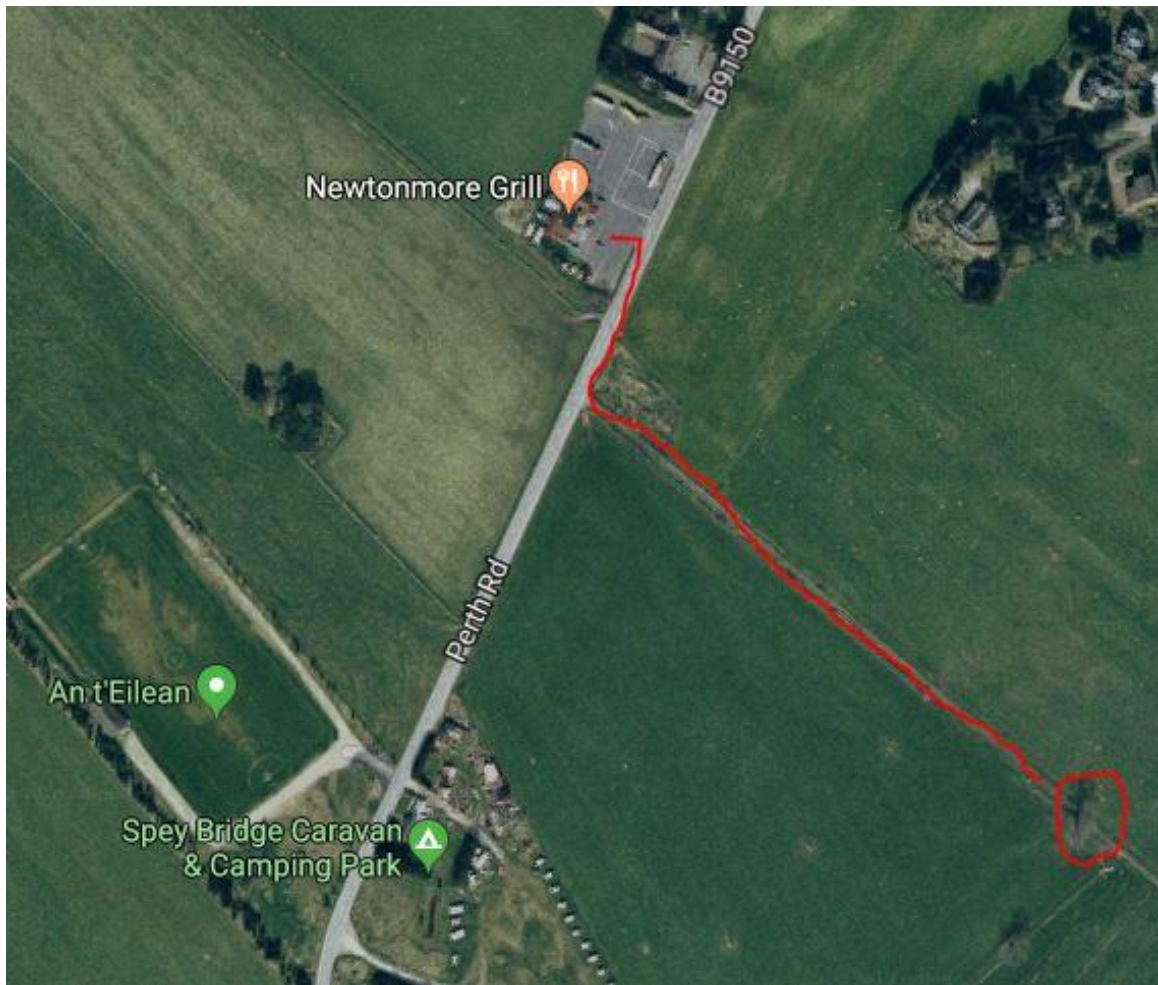
The Newtonmore Stone located at Newtonmore sits directly underneath a single tree along a dirt road. The best thing to do to locate this stone is to park your vehicle at the restaurant called 'The Newtonmore Grill' & walk from there down the dirt road as you can't drive down here.



The two photos above show the dirt road & the tree where the stone sits.



Pictured is the restaurant & car park.



Shown is the location of the stone from the Neatonmore Grill restaurant.

Glen Roy Stones:

When arriving at the two Glen Roy Stones you will find a small parking place next to the stones to safely park that is just off the road allowing other cars to pass safely away from your own car.



Shown in red is the direction of travel along with the area where you can park marked with a red circle.

The location where the two stones sit is marked with a blue circle.

Testing Stone Of The Fianna:

When arriving at the Fianna Stone you will find an area just past where the stone sits to park your car then walk back towards the stone.



Above is a picture showing the direction of travel marked in red with the parking area within the red circle. You can also drive in from the opposite direction. The stones location is marked in the blue circle.



You will find an area to park at the other end of this bridge following the road off to the left.

Castle Menzies Stone:

The Castle Menzies Stone sits in the corner of the castle left of the castle door. Before arriving at the castle to lift the stone, contact the castle Manager via the Castle Menzies website to arrange to lift the stone. Before making an attempt.



Sadlin Mare Stone:

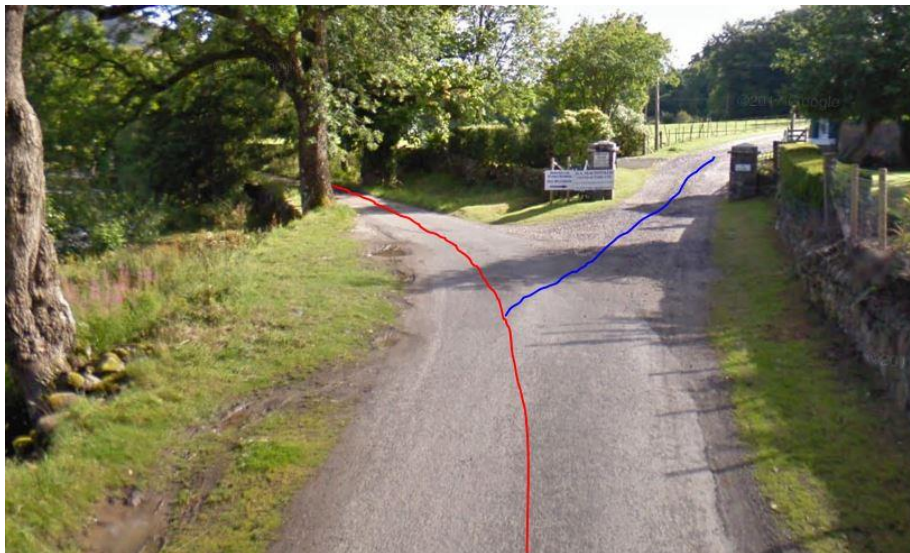
This stone sits close to the road side as can be seen in the photo bellow. There is a space just past where the stone sits where you can park your car & walk back towards the stone.



Picture above showing a parking area at the side of the road.

Ardvorlich Stone:

This stone sits on land owned by the Ardvorlich Estate which is also the main path that many people use as a start of a hill walk.



As the stone sits on Ardvorlich Estate you may only use one entrance onto their ground. Follow the road round via the red line shown & avoid the path showing the blue line.



After only about 5 minutes driving you will come to the small bridge shown in the picture above.



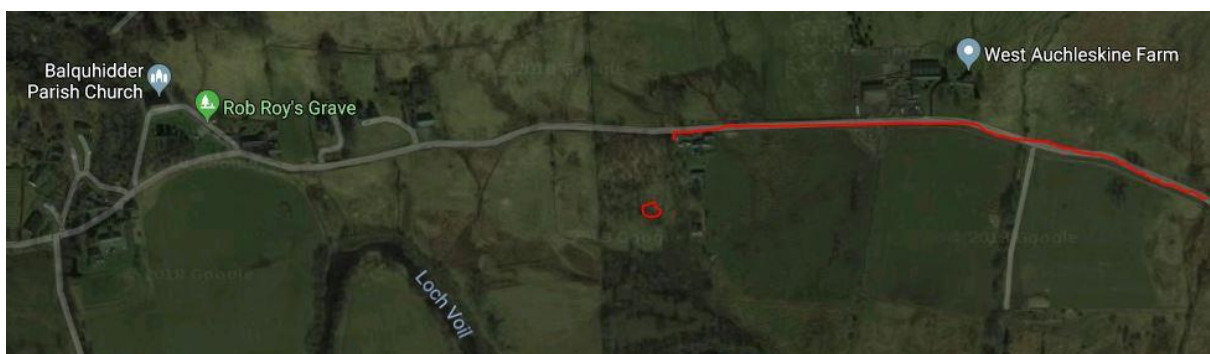
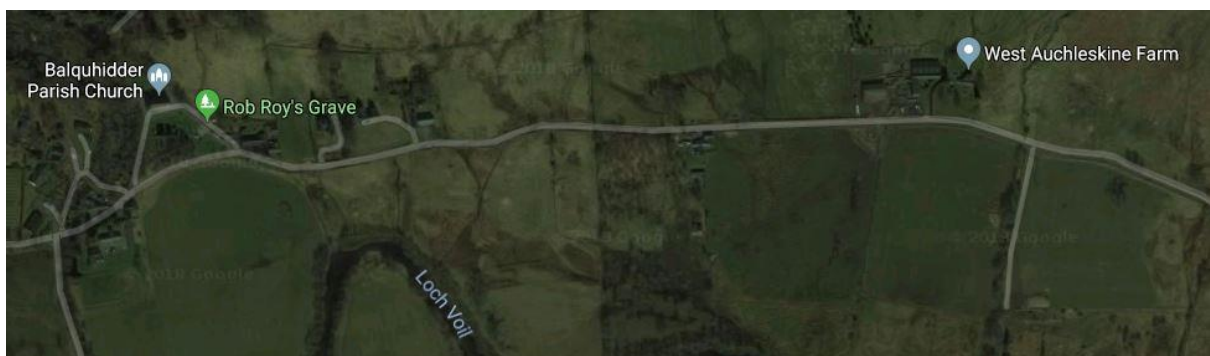
As soon as you are over the bridge you will see the road to the estate that you can use turning off to the right. Follow this road to the Estate house & the Ardvorlich Stone.

Puterach Stone:

The Puterach Stone sits in a field on private land so before walking down & attempting to lift the stone, know on the door of the house to let them know you are there.



The three pictures below show the location of the house & stone, with the stone being marked in a red circle. A good idea is to drive part the house & park at the church yard which is the grave site of Rob Roy which is sign posted. This is only a few minutes walk back towards where the stone sits. You may be able to park at the house where the stone sits if there is parking room & you are not taking up to much space.





Dinnie Stones:

The Dinnie Stones sit outside ‘Potarch Café & Restaurant’ & permission must be obtained & booked before any attempt at lifting will be granted. Permission can be granted through a website dedicated to the two Dinnie Stones called – www.dinniestones.com



Shown is the Potarch Café & Restaurant

Auchernack Stones:

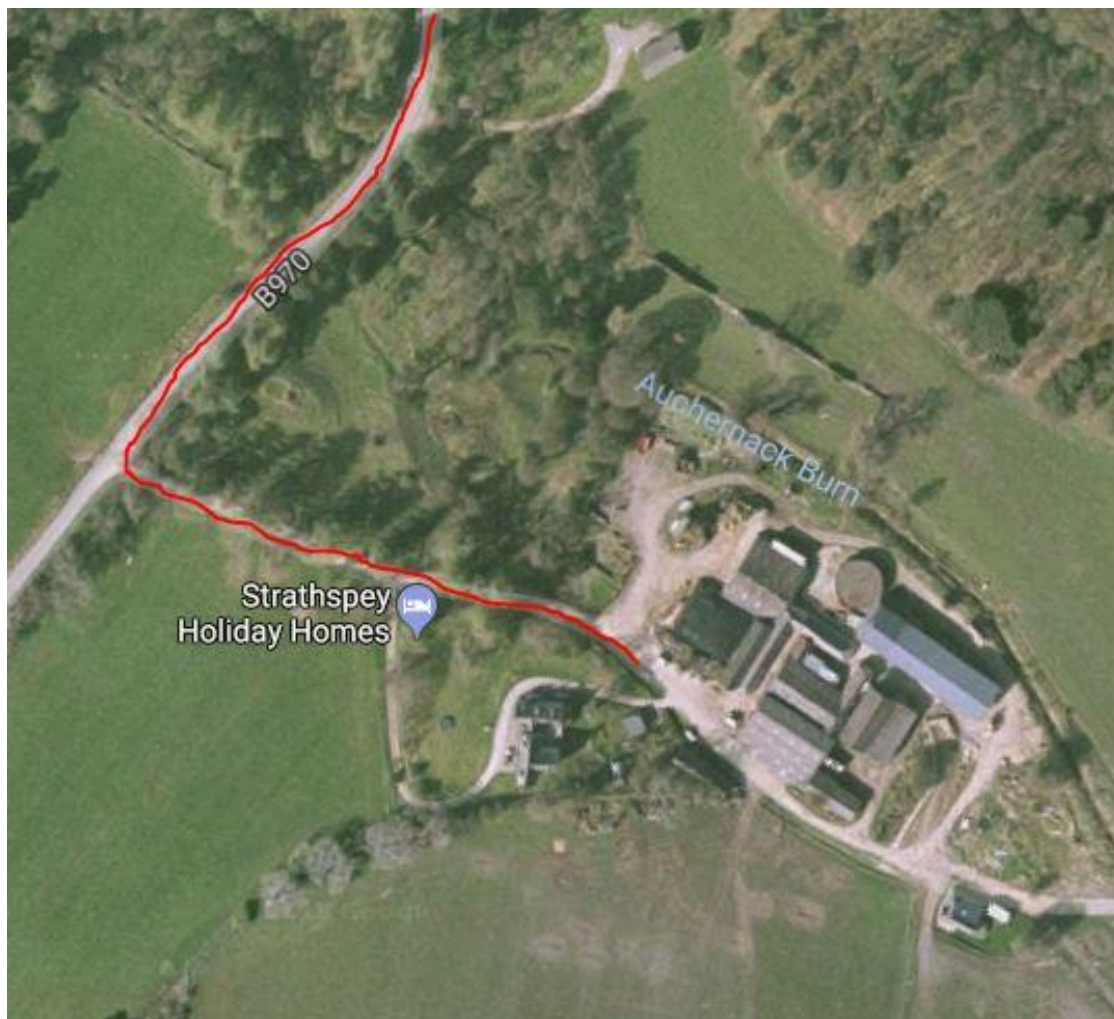
These two stones sit on private land but the owner is happy for people to come along and have their attempt at breaking them from the ground. The stones sit at Auchernack Farm.



Shown is the entrance to the farm off the main road.



Shown is the farm itself after turning off the main road.



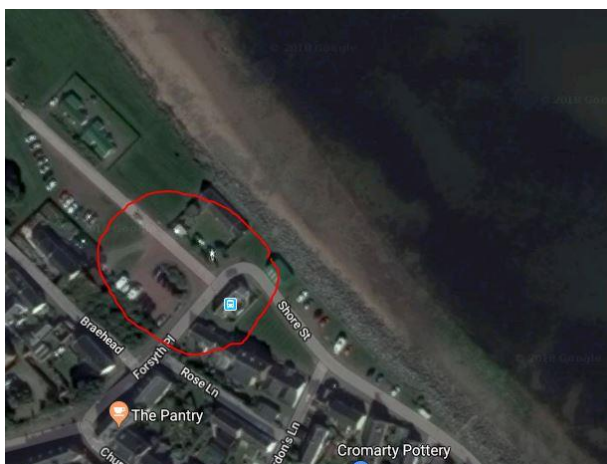
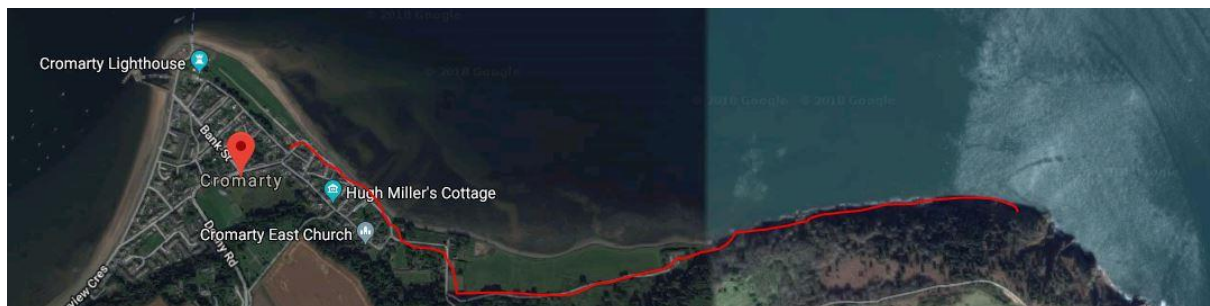
Shown in the photo above is an aerial view to indicate where the two stones sit on the farm. The end of the red line shown indicates where the stones sit waiting.

Dropping Cave Stone:

This stone sits by the sea & a walk across stones & some rough terrain is a must here so make sure you are wearing walking shoes for this. As the walk to the stone is next to the sea then you must always check the tide times coming in & out as the sea can stop you from reaching the stone on high tide times.



Shown in the 4 photos below is an idea of somewhere to park the car to start walking to the stone.





The photos here show the area marked in the red circle. There are also other places to park with this carpark being one option.



After you have parked your car, walk towards the woods & then start walking through the woods until you reach the black chair shown below.



Once you reach this chair, walk down the slim path onto the stone beached area. Walk along here for about 15 to 20 minutes till reaching the Dropping Cave Stone.



Shown is the stone beached walk.

Shown in then to photo below is where the stone sits. An indication to know when you are there is the tree that can be seen in the photo that is partly fallen over.



The cave where the stone sits is shown to right.



Strathmore Of Durness Stone:

The stone here can be easily seen as it sits next to a loan tree at the side of the road which can be seen in the photos below.



